

**TOPPS**<sup>®</sup>  
safety apparel, inc.



**Public Safety and Flame Resistant  
Industrial Apparel**

# About Topps Safety Apparel, Inc.

Topps Safety Apparel, Inc., one of the leading manufacturers of Public Safety and Flame Resistant Industrial Apparel, was founded in Rochester, Indiana in 1938.

The company's corporate offices are still in Rochester where all sales, service and distribution activities take place. Manufacturing and quality control processes are located in the company's production facilities in Edmonton and Greensburg, Kentucky.

Topps has a complete range of F.R. and Public Safety garments offering varying levels of protection, depending on the individual requirements of the working situation.

Topps garments are sold throughout the U.S.A. and beyond through a network of leading distributors and garment rental companies. We believe that service through local

distribution is in most instances the best way to achieve the highest level of customer service. The local distributor is always available to provide appropriate onsite product information when required.



## Topps Safety Apparel is ISO 9001:2008 certified.



Customer satisfaction is the number one concern at Topps. The highest levels of product performance are achieved by optimal design and manufacturing guaranteed by our quality assurance procedures. These procedures have been assessed and registered as in conformance with ISO 9001.

Topps Safety Apparel, Inc. attaches great importance to its Quality Assurance System and all the principles it encompasses. This system will help to insure that the very best materials, fabrics and garment manufacturing methods are used and will give you the confidence that when you specify a Topps garment, you're selecting the highest quality product available.

# Table of Contents

NOMEX® .....	4-16	Public Safety and Uniform Apparel.....	37-43
Wildland Fire Fighting (Brush Gear) .....	17-21	EMS Gear with P.T.F.E. Membrane .....	44-45
Extrication Suits .....	22-24	Lined Coveralls.....	46
FIREWEAR® .....	25-26	Customizing Options.....	47
INDURA® and ULTRASOFT® .....	27-29	Fabric Information.....	48-49
 Flame Resistant.....	30-36	How to Measure .....	50

**Our garments are manufactured from these quality materials.**

See pages 48 and 49 for more in-depth information.

**DuPont™**  
**Nomex®**

 **Indura™**

 **TENCATE**  
**Advance™**

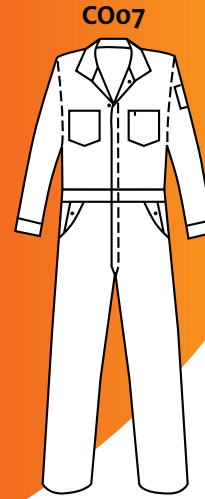
**Firewear**  
FFR FABRICS

 **UltraSoft®**

 **TENCATE**  
**Tecasafe Plus™**

*Nomex® is a DuPont registered trademark. INDURA® and UltraSoft® are registered trademarks of Westex, Inc. by Milliken. Firewear® FFR Fabrics are trademarks of Springfield L.L.C. by Milliken. Advance™/Tecasafe® plus are trademarks of Southern Mills, Inc. d/b/a TenCate Protective Fabrics.*

# Unlined Coveralls of NOMEX® (4.5 oz.)



Unlined Coveralls

## Model C007 Unlined Coveralls

**Fabric:** 4.5 oz. per square yard Dupont NOMEX® aramid

- two patch breast pockets
- heavy-duty, two way brass zipper with NOMEX® zipper tape
- reinforced nickel plated brass snaps covered on the inside
- 2-in-1 utility/tool pocket on right leg
- two hip pockets with a snap closure on the left hip pocket
- pleated bi-swing back with elasticized waistband
- felled seams throughout lower half of garment
- side access to pants with snap closure
- NOMEX® ripstop pocketing
- two inserted front pockets
- adjustable cuffs with snap closure
- no metal exposed to skin
- sewn throughout with NOMEX® thread
- sleeve pocket on left sleeve

- 5505 Navy
- 5515 Royal
- 5530 Grey
- 5540 Orange
- 5545 Red
- 5550 Tan
- 5575 Spruce

### UNLINED COVERALL SIZES:

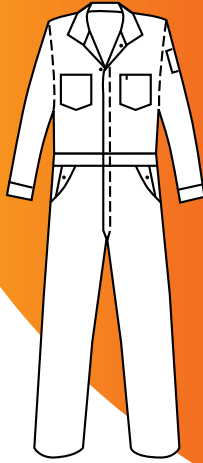
Chest:	36	38	40	42	44	46	48	50	52	54	56	58	60	62
Short:	.	.	.	.	.	.	.	.	.	.	.	.	.	.
Regular:	.	.	.	.	.	.	.	.	.	.	.	.	.	.
Tall:	.	.	.	.	.	.	.	.	.	.	.	.	.	.
X-Tall:	.	.	.	.	.	.	.	.	.	.	.	.	.	.

Short: 5' 4"-5' 7" Regular: 5' 7½"- 5' 11" Tall: 5' 11½"- 6' 3" X-Tall: 6' 3½"-6'6"

Note: Additional sizes are available in some colors.

# Unlined Coveralls of NOMEX® (6.0 oz.)

CO07



Unlined Coveralls



## Model CO07 Unlined Coveralls

**Fabric:** 6.0 oz. per square yard Dupont NOMEX® aramid

- two patch breast pockets
- heavy-duty, two way brass zipper with NOMEX® zipper tape
- reinforced nickel plated brass snaps covered on the inside
- 2-in-1 utility/tool pocket on right leg
- two hip pockets with a snap closure on the left hip pocket
- pleated bi-swing back with elasticized waistband
- felled seams throughout lower half of garment
- side access to pants with snap closure
- two inserted front pockets
- NOMEX® ripstop pocketing
- adjustable cuffs with snap closure
- no metal exposed to skin
- sewn throughout with NOMEX® thread
- sleeve pocket on left sleeve

### UNLINED COVERALL SIZES:

Chest:	36	38	40	42	44	46	48	50	52	54	56	58	60
Short:	.	.	.	.	.	.	.	.	.	.	.	.	(Navy and Royal Only)
Regular:	.	.	.	.	.	.	.	.	.	.	.	.	.
Tall:	.	.	.	.	.	.	.	.	.	.	.	.	.
X-Tall:	.	.	.	.	.	.	.	.	.	.	.	.	(Navy and Royal Only)

Regular: 5' 7½" - 5' 11" Tall: 5' 11½" - 6' 3" X-Tall: 6' 3½" - 6' 6"

Note: Additional sizes are available in some colors.

5605  
Navy

5615  
Royal

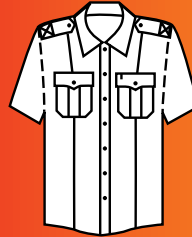
5640  
Orange



# Public Safety Shirts of NOMEX®



SH96



Public Safety Short Sleeve

SH95



Public Safety Long Sleeve

## Model SH96 Short Sleeve Model SH95 Long Sleeve Public Safety Shirts

**Fabric:** 4.5 oz. per square yard DuPont NOMEX® aramid

- three-ply banded collar with sewn-in stays
- two-ply yoke and placket front
- five sewn-in military creases with epaulets
- pleated pockets with scalloped flaps which include hook and loop closures at each corner
- long sleeve shirts have adjustable cuffs
- long rounded tails
- loose badge tab (in pocket)
- sewn throughout with NOMEX® thread

SH95

5505  
Navy

5520  
Med.  
Blue

SH96

5505  
Navy

5520  
Med.  
Blue

### SHORT SLEEVE PUBLIC SAFETY SHIRT SIZES:

Small	Medium	Large	X-Large	2X-Large	3X-Large	4X-Large
14-14½	15-15½	16-16½	17-17½	18-18½	19-19½	20-20½

### LONG SLEEVE PUBLIC SAFETY SHIRT SIZES:

Neck/ Sleeve	Small	Medium	Large	X-Large	2X-Large	3X-Large
33"	.	.	.	.	.	.
35"	.	.	.	.	.	.
37"	.	.	.	.	.	.

# Uniform Style Shirts of NOMEX®

SH16



Uniform Style Short Sleeve

SH17



Uniform Style Long Sleeve



## Model SH16 Short Sleeve Model SH17 Long Sleeve Uniform Shirts

**Fabric:** 4.5 oz. per square yard DuPont NOMEX® aramid

- long sleeve has three-ply banded collar with sewn-in stays
- short sleeve has multi-layered convertible collar with sewn-in stays
- double-stitched, oversized pockets
- button flap closures on both pockets
- long sleeve shirts have adjustable cuffs
- heat resistant melamine buttons
- placket front
- two-ply yoke
- long rounded tails
- loose badge tab (in pocket)
- sewn throughout with NOMEX® thread

SH16

5505 Navy

SH17

5505 Navy

5515 Royal

5550 Tan

### SHORT SLEEVE SHIRT SIZES:

Small	Medium	Large	X-Large	2X-Large	3X-Large
14-14½	15-15½	16-16½	17-17½	18-18½	19-19½

### LONG SLEEVE SHIRT SIZES:

	Small	Medium	Large	X-Large	2X-Large	3X-Large
Neck/Sleeve	14-14½	15-15½	16-16½	17-17½	18-18½	19-19½
Slv Length-M	32½	33½	34½	35	35½	36½
Slv Length-L		35	35½	36½	37½	38

# Hidden Snap-Front Shirts of NOMEX®



**SH10**



Long Sleeve  
Hidden Snap-Front Shirt

**SH06**



Short Sleeve  
Hidden Snap-Front Shirt

## Model SH10

### Long Sleeve Hidden Snap-Front Shirts

**Fabric:** 4.5 oz. per square yard DuPont NOMEX® aramid

- false button placket front
- shirt closes under placket with nickel plated brass snaps
- three-ply banded collar with sewn-in stays
- two-ply yoke
- five sewn-in military creases with epaulets
- breast pockets with scalloped flaps which include hook and loop closure
- adjustable cuff with snap closure
- long rounded tails
- sewn throughout with NOMEX® thread
- loose badge tab (in pocket)

## Model SH06

### Short Sleeve Hidden Snap-Front Shirts

**Fabric:** 4.5 oz. per square yard DuPont NOMEX® aramid

- false button placket front
- shirt closes under placket with nickel plated brass snaps
- three-ply banded collar with sewn-in stays
- two-ply yoke
- five sewn-in military creases with epaulets
- breast pockets with scalloped flaps which include hook and loop closure
- long rounded tails
- sewn throughout with NOMEX® thread
- loose badge tab (in pocket)

SH10

5505 Navy

SH06

5505 Navy

#### HIDDEN SNAP-FRONT LONG SLEEVE SHIRT SIZES:

Neck/ Sleeve	Small 14-14½	Medium 15-15½	Large 16-16½	X-Large 17-17½	2X-Large 18-18½	3X-Large 19-19½
33"	.	.	.	.	.	.
35"	.	.	.	.	.	.
37"	.	.	.	.	.	.

#### HIDDEN SNAP-FRONT SHORT SLEEVE SHIRT SIZES:

Small	Medium	Large	X-Large	2X-Large	3X-Large
14-14½	15-15½	16-16½	17-17½	18-18½	19-19½



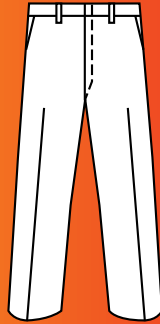
# Snap-Front Shirts and Pants of NOMEX®

**SH15**



Long Sleeve Snap-Front Shirt

**PA70**



Uniform Style



## Model SH15

### Long Sleeve Snap-Front Shirts

**Fabric:** 4.5 oz. per square yard Dupont NOMEX® aramid

- three-ply banded collar with sewn-in stays
- two-ply yoke and placket front with heavy-duty snap closure
- nickel plated brass snaps
- two breast pockets with scalloped flaps and snap closure; left pocket has pencil slot
- hook and loop closure on each corner of pocket flaps
- adjustable cuffs with snap closure
- long rounded tails
- sewn throughout with NOMEX® thread

SH15 Shirts are compliant with N.F.P.A. 2112 (Current Edition)

## Model PA70

### Uniform Style Pants

**Fabric:** 6.0 oz. and 7.5 oz. per square yard  
 DuPont NOMEX® aramid

- uniform style with permanent creases
- hook and eye closure with french fly
- bottoms of side pockets are reinforced using an "X" bartack
- two inserted front pockets
- NOMEX® ripstop pocketing
- outseams are reinforced by topstitching entire length
- self-locking brass zipper with NOMEX® zipper tape
- seven belt loops will take 2" belts
- two welted hip pockets; left one has button and loop closure
- sewn throughout with NOMEX® thread

PA70 (6.0 oz.) Pants are compliant with N.F.P.A. 1975 and N.F.P.A. 2112 (Current Edition)

PA70 (7.5 oz.) Pants are compliant with N.F.P.A. 1975 (Current Edition)

SNAP-FRONT LONG SLEEVE SHIRT SIZES:							
		Small	Medium	Large	X-Large	2X-Large	3X-Large
Neck/Sleeve		14-14½	15-15½	16-16½	17-17½	18-18½	19-19½
Short	32"	•	•	•			
Medium	33½"	•	•	•	•	•	•
Long	35"		•	•	•	•	•
X-Long	36½"		•	•	•	•	•

NOTE: Additional sizes are available in some colors.

PANT SIZES:	
Waist:	28"-36" all sizes; 38"-50" even sizes
Open Bottoms:	37" unfinished

NOTE: Additional sizes are available

SH15

5505 Navy

5515 Royal

5550 Tan

PA70  
6.0 oz.

5605 Navy

5615 Royal

7.5 oz.

5705 Navy

# Bomber Jacket and Insulated Parka of NOMEX®

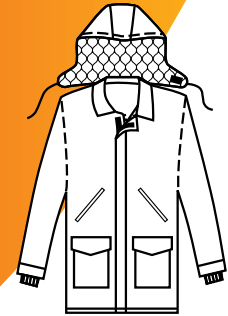


JK02



Bomber Jacket

JK11



Insulated Parka

## Model JK02

### Bomber Jacket

**Fabric:** 6.0 oz. per square yard DuPont NOMEX® aramid

**Lining Fabric:** DuPont 12.6 oz. NOMEX® aramid  
(6.0 oz. NOMEX® aramid batting quilted on each side to a 3.3 oz. NOMEX® facecloth)

- waist-length with elasticized waistband
- two, oversized, two-way divided pockets with access from both top and sides
- inserted breast pocket on right side
- self-locking brass zipper with NOMEX® zipper tape
- hook and loop adjustable cuffs
- removable NOMEX® liner with NOMEX® knit cuffs
- sewn throughout with NOMEX® thread

## Model JK11

### Insulated Parka

**Shell Fabric:** 6.0 oz. per square yard DuPont NOMEX® aramid

**Lining Fabric:** DuPont 9.3 oz. NOMEX® aramid  
(6.0 oz. NOMEX® aramid batting quilted to a 3.3 oz. NOMEX® facecloth)

- lower front bellowed patch pockets
- two slash style welted front pockets
- waist level wind barrier with snap closures on inside
- fully insulated collar
- heavy-duty brass zipper closure with FR hook and loop wind flap
- fully insulated sleeves with inside knit cuffs
- detachable insulated hood with drawstring and hook and loop closure
- sewn throughout with NOMEX® thread

JK02

5605 Navy

JK11

5605 Navy

#### BOMBER JACKET SIZES:

	Small	Medium	Large	X-Large	2X-Large	3X-Large	4X-Large
	34-36	38-40	42-44	46-48	50-52	54-56	58-60
Regular:	.	.	.	.	.	.	.
Tall:	.	.	.	.	.	.	.

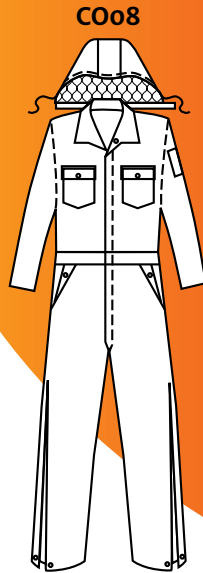
Regular: 5' 7½"-5' 11" Tall: 5' 11½"-6' 3"

#### PARKA SIZES:

	Small	Medium	Large	X-Large	2X-Large	3X-Large	4X-Large
	34-36	38-40	42-44	46-48	50-52	54-56	58-60
Regular:	.	.	.	.	.	.	.
Tall:	.	.	.	.	.	.	.

Regular: 5' 7½"-5' 11" Tall: 5' 11½"-6' 3"

# Lined Coverall of NOMEX®



Lined Coverall



## Model CO08

### Lined Coverall

**Fabric:** 6.0 oz. per square yard Dupont NOMEX® aramid

**Lining Fabric:** DuPont 9.3 oz. NOMEX® aramid  
(6.0 oz. NOMEX® aramid batting quilted to a 3.3 oz. NOMEX® facecloth)

- two patch breast pockets with snap closure flaps
- two inserted front pockets and two hip pockets
- heavy-duty, two-way brass zipper with NOMEX® zipper tape
- two snaps above front zipper to close front up to the neck
- heavy-duty brass leg zippers
- NOMEX® leg gusset gives protection even with leg zippers open
- detachable hood with a drawstring and two button adjustable closure
- hood attaches with a zipper
- side access to pants with snap closure
- NOMEX® ripstop pocketing
- no exposed metal to skin
- sewn throughout with NOMEX® thread



#### LINED COVERALL SIZES:

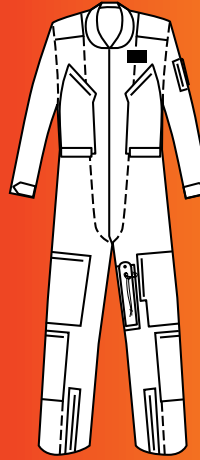
	Small	Medium	Large	X-Large	2X-Large	3X-Large
	34-36	38-40	42-44	46-48	50-52	54-56
Short:	•	•	•	•	•	•
Regular:	•	•	•	•	•	•
Tall:		•	•	•	•	•
X-Tall:			•	•	•	•

Short: 5' 4"-5' 7" Regular: 5' 7½"-5' 11" Tall: 5' 11½"-6' 3" X-Tall: 6' 3½"-6' 6"

# Flight Suit and Tech Coats of NOMEX®

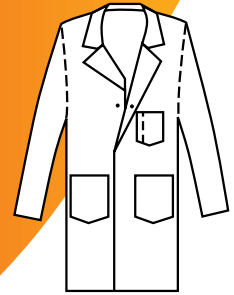


FS64



Flight Suit

TC16



Tech Coats

## Model FS64 Flight Suit

**Fabric:** 4.5 oz. per square yard DuPont NOMEX® aramid

- two large breast pockets with slanted zipper closure
- heavy-duty, two-way brass zipper with NOMEX® zipper tape
- zippers at the bottom of the legs
- two patch pockets on each leg with zipper closures
- 2-in-1 knife/utility pocket with snap flap on left leg
- 5-in-1 pocket on left sleeve; one patch pocket with zipper on side and four pencil type pockets
- double fabric reinforced shoulders
- no metal exposed to skin
- sewn throughout with NOMEX® thread (minimum order 4)

## Model TC16 Tech Coats

**Fabric:** 4.5 oz. per square yard DuPont NOMEX® aramid

- knee length style
- one left breast pocket with pencil slot
- two large lower patch pockets
- four nickel plated brass snaps are concealed to prevent scratching
- belted back with pleats
- back center vent
- side access to pants
- no metal exposed to skin
- sewn throughout with NOMEX® thread

FS64

5515  
Royal

TC16

5505  
Navy

5515  
Royal

### FLIGHT SUIT SIZES:

Chest:	34	36	38	40	42	44	46	48	50	52
Short:	.	.	.	.	.	.	.	.	.	.
Regular:	.	.	.	.	.	.	.	.	.	.
Tall:	.	.	.	.	.	.	.	.	.	.

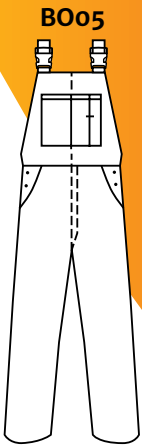
Short: 5' 4"-5' 7" Regular: 5' 7½"-5' 11" Tall: 5' 11½"-6' 3"

### TECH COAT SIZES:

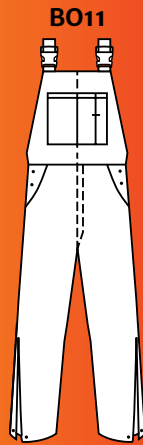
Small	Medium	Large	X-Large	2X-Large	3X-Large
34-36	38-40	42-44	46-48	50-52	54-56



# Bib Front Overalls of NOMEX®



Unlined Bib Overalls



Lined Bib Overalls



## Model BO05 Unlined Model BO11 Lined Bib Front Overalls

**Fabric:** 6.0 oz. per square yard DuPont NOMEX® aramid

**Lining Fabric:** (on Lined Bib Front Overalls):  
DuPont 9.3 oz. NOMEX® aramid  
(6.0 oz. NOMEX® aramid batting quilted  
to a 3.3 oz. NOMEX® facecloth)

- bib style front and back with adjustable shoulder straps
- shoulder straps close with heavy-duty buckle
- three pockets on the front bib
- two large rear patch pockets
- 2-in-1 utility pocket on right leg
- waist closes with two buttons on each side
- two inserted front pockets
- NOMEX® ripstop pocketing
- snap closure in fly
- lined bib overalls have leg zippers with snap closures
- no metal exposed to skin
- sewn throughout with NOMEX® thread

BO05

5605  
Navy

BO11

5605  
Navy

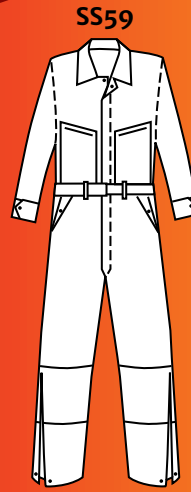
### BIB OVERALL SIZES:

	Small	Medium	Large	X-Large	2X-Large	3X-Large	4X-Large
Waist:	30-32	34-36	38-40	42-44	46-48	50-52	54-56
Regular:	.	.	.	.	.	.	.
Tall:	.	.	.	.	.	.	.

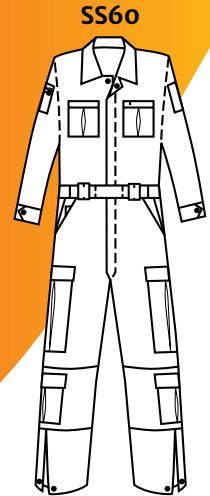
Regular: 5' 7½"-5' 11" Tall: 5' 11½"-6' 3"



# SQUAD SUIT and SQUAD SUIT T-14 of NOMEX®



Squad Suit®



Squad Suit® T-14

## MODEL SS59 Squad Suit MODEL SS60 Squad Suit T-14

**Fabric:** 6.0 oz. per square yard DuPont NOMEX® aramid

- pleated bi-swing back with elasticized waist
- heavy-duty, two-way brass zipper
- adjustable hook and loop belt closure
- adjustable sleeve cuffs
- side access to pants
- two inserted front pockets
- reinforced knees
- zippered leg bottoms with adjustable snaps
- loose badge tab (in pocket)
- no metal exposed to skin
- sewn throughout with NOMEX® thread

### MODEL SS59 Additional Features:

- two slanted breast pockets with zipper closure
- two rear patch pockets with a zipper on the left pocket
- large utility pocket on right leg

### MODEL SS60 Additional Features:

- two pleated breast pockets with flaps
- sleeve pockets on both sleeves
- two pleated cargo pockets on each leg
- two patch hip pockets on the rear which fasten closed with pocket flaps and hook and loop tape

- **NOTE:** SS60-5605 Navy Blue available on special order (min 10)

*Garments shown above with optional reflective trim.*

SS59

5605 Navy

SS60

5639 Black

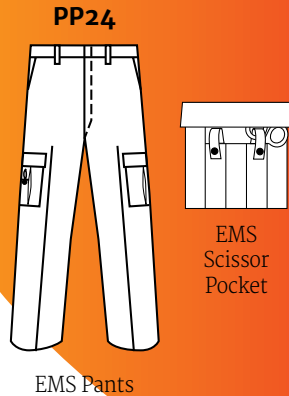
### SQUAD SUIT SIZES:

	Small	Medium	Large	X-Large	2X-Large	3X-Large	4X-Large
Sizes:	34-36	38-40	42-44	46-48	50-52	54-56	58-60
Short:	.	.	.	.	.	.	.
Regular:	.	.	.	.	.	.	.
Tall:	.	.	.	.	.	.	.
X-Tall:	.	.	.	.	.	.	.

Short: 5'4"-5'7" Regular: 5'7½"-5'11" Tall: 5'11½"-6'3" X-Tall: 6'3½"-6'6"

Note: Additional sizes available in some colors.

# EMS Glove Pocket Pants of NOMEX®



## Model PP24 Plain Front Glove Pocket Pants of NOMEX®

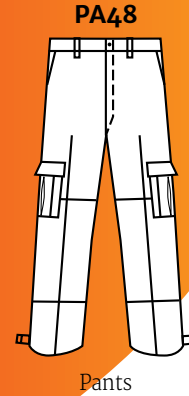
**Fabric:** 6.0 oz. per square yard DuPont NOMEX® aramid

- full cut pant for ease of motion and comfort with permanent creases both front and back
- unique design glove/scissor pocket on the right leg. The pocket comprises a three part scissor pocket on the outside, a separate glove pocket in the center with a large 8½" x 9" bellowed cargo pocket behind. The separate glove pocket in the center measures 5½" x 7½" and ensures that surgical gloves can be stored separately from other items. The glove/scissor pocket fastens closed with a pocket flap and hook and loop tape
- the left leg has a spacious bellowed cargo pocket measuring 7" x 8" with a 2" bellow. The cargo pocket fastens closed with a pocket flap and hook and loop tape
- two patch hip pockets on the rear which fasten closed with a pocket flap and hook and loop tape
- reinforced knees for enhanced durability
- fully lined waistband
- two inserted front pockets
- NOMEX® ripstop pocketing
- self-locking brass zipper
- seven belt loops
- sewn throughout with NOMEX® thread

### PANT SIZES:

Waist:	28"-37" all sizes • 38"-48" even sizes
Open Bottoms:	37" unfinished

# Dual Certified Pants of NOMEX®



## Model PA48 Pants

**Fabric:** 7.5 oz. per square yard DuPont NOMEX® aramid

- waistband closes with a button/buttonhole
- two inserted front pockets
- Nomex® ripstop pocketing
- brass zipper with Nomex® zipper tape
- reinforced knees
- waist adjustable with hook and loop take up tabs
- bottoms of side pockets are reinforced using an “X” bartack
- two welted hip pockets with hook and loop closure on pocket flaps
- two pleated cargo pocket with hook and loop closure on flaps
- outseams and seat are reinforced by double stitching entire length
- hook and loop take up straps with metal loop ring at leg bottoms
- sewn throughout with NOMEX® thread

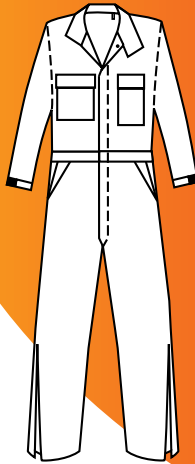


### PANT SIZES:

Waist: 30"-48" (Even Sizes). Inseams 30, 32 or 34.  
All pants will be supplied with finished leg bottoms  
(hook and loop take up tabs on leg bottoms).

# Coveralls for Wildland Fire Fighting (Brush Gear)

C076



Coverall



## Model C076

### Coverall

**Fabric:** 6.0 oz. per square yard DuPont NOMEX® aramid or 9.0 oz. per square yard UltraSoft®

- heavy-duty, two-way brass zipper
- reinforced nickel plated brass snaps covered on the inside
- pleated bi-swing back with elasticized waistband
- right breast pocket with full flap, with hook and loop closure
- radio pocket on left chest with full hook and loop closure
- two inserted front pockets
- two hip pockets with flaps and hook and loop closures
- no metal exposed to skin
- sewn throughout with NOMEX® thread
- 10" leg zippers
- leg gusset gives protection even with leg zippers open

Please note, in order to be compliant with NFPA 1977, these garments fit much more loosely than standard Topps garments. We recommend utilizing try-on garments to ensure the correct fit.

### Options for the Wildland Styles

2" Scotchlite Triple Trim in lime yellow/silver/lime yellow and red orange/silver/red orange. Also available in solid 1" or 2" Scotchlite in silver, lime/yellow and red/orange.



### COVERALL SIZES:

	Small	Medium	Large	X-Large	2X-Large	3X-Large	4X-Large
	34-36	38-40	42-44	46-48	50-52	54-56	58-60
Short:	.	.	.	.	.	.	.
Regular:	.	.	.	.	.	.	.
Tall:	.	.	.	.	.	.	.
X-Tall:	.	.	.	.	.	.	.

Short: 5' 4"-5' 7" Regular: 5' 7½"-5' 11" Tall: 5' 11½"-6' 3" X-Tall: 6' 3½"-6' 6"

Nomex®

5648  
Yellow

Ultrasoft®

3848  
Yellow

# Jackets for Wildland Fire Fighting (*Brush Gear*)

JK12



Jacket



## Model JK12

### Jacket

**Fabric:** 6.0 oz. per square yard DuPont NOMEX® aramid or 9.0 oz. per square yard UltraSoft®

- long style to ensure adequate interface with pants
- radio pocket on left front with hook and loop flap closure
- bellowed breast pocket on right front with hook and loop flap closure
- two bellowed lower pockets with hook and loop flap closure
- hook and loop closure on sleeve cuffs
- large collar with throat piece with hook and loop closure
- heavy-duty zipper with NOMEX® zipper tape
- hook and loop closure tabs on front to conceal zipper

Please note, in order to be compliant with NFPA 1977, these garments fit much more loosely than standard Topps garments. We recommend utilizing try-on garments to ensure the correct fit.

Nomex®

5648  
Yellow

UltraSoft®

3848  
Yellow

### JACKET SIZES:

	Small	Medium	Large	X-Large	2X-Large	3X-Large	4X-Large
	34-36	38-40	42-44	46-48	50-52	54-56	58-60
Regular:	.	.	.	.	.	.	.
Tall:	.	.	.	.	.	.	.

Regular: 5' 7½"-5' 11" Tall: 5' 11½"-6' 3"

Garment shown above with optional reflective trim.



# Pants for Wildland Fire Fighting (Brush Gear)

PA12



Pants



## Model PA12

### Pants

**Fabric:** 6.0 oz. per square yard DuPont NOMEX® aramid  
or 9.0 oz. per square yard UltraSoft®

- waist adjustable with hook and loop take up tabs
- outseams and seat seam are reinforced by double topstitching entire length
- two belled cargo pockets with hook and loop closures on flaps
- waistband closes with heavy-duty snap
- two inserted front pockets
- hook and loop take up tabs on leg bottoms
- two patch hip pockets with flaps and hook and loop closure
- bottoms of side pockets are reinforced using an "X" bartack
- sewn throughout with NOMEX® thread
- self-locking brass zipper with NOMEX® zipper tape

Please note, in order to be compliant with NFPA 1977, these garments fit much more loosely than standard Topps garments. We recommend utilizing try-on garments to ensure the correct fit.



### Options for the Wildland Pants

Leg Zippers with Gussets  
are available as an optional  
alteration. Call for details.

Nomex®

5648  
Yellow

UltraSoft®

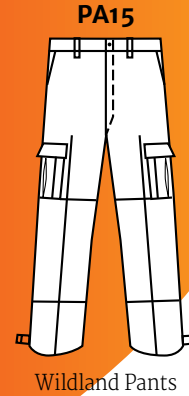
3848  
Yellow

### PANT SIZES:

Waist:

30-48 (Even Sizes). Inseams 30, 32 or 34.  
All pants will be supplied with finished leg bottoms  
(hook and loop take up tabs on leg bottoms).

# Wildland Pants of ADVANCE™ (Brush Gear)



## Model PA15 Wildland Pants

**Fabric:** 7.0 oz. per square yard ADVANCE™ Rip Stop  
(40% NOMEX® / 60% Kevlar)

- two welted hip pockets
- pocket flaps on hip pockets with hook and loop closure
- two pleated cargo pockets with hook and loop closure on flaps
- reinforced knees
- waist adjustable with hook and loop take up tabs
- outseams and seat seam are reinforced by double topstitching entire length
- waistband closes with button/buttonhole
- hook and loop take up straps with metal loop ring at leg bottoms
- two inserted front pockets
- NOMEX® ripstop pocketing
- brass zipper with NOMEX® zipper tape
- sewn throughout with NOMEX® thread

Please note, in order to be compliant with NFPA 1977, these garments fit much more loosely than standard Topps garments. We recommend utilizing try-on garments to ensure the correct fit.

Spruce  
6075

6052  
Khaki

### PANT SIZES:

Waist:

30"-48" (Even Sizes). Inseams 30, 32, 34 or 36.  
All pants will be supplied with finished leg bottoms  
(hook and loop take up tabs on leg bottoms).

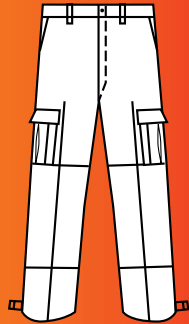
# Shirts and Pants for Wildland Fire Fighting (Brush Gear)

SH35



Wildland Shirt

PA15



Wildland Pants



## Model SH35 Wildland Shirt

**Fabric:** 6.0 oz. per square yard DuPont NOMEX® aramid,  
5.8 oz. or 7.0 oz. per square yard TECASAFE® Plus

- wide overlapping collar with hook and loop closure so that collar can remain upright after extension into the vertical position as required by NFPA 1977
- two double stitched, breast pockets with hook and loop flaps, left with pencil slot
- hook and loop adjustments on sleeve cuffs
- heat resistant melamine buttons
- pencil pocket on left sleeve
- sewn throughout with NOMEX® thread

Please note, in order to be compliant with NFPA 1977, these garments fit much more loosely than standard Topps garments. We recommend utilizing try-on garments to ensure the correct fit.

## Model PA15 Wildland Pants

**Fabric:** 6.0 oz. per square yard DuPont NOMEX® aramid  
or 7.0 oz. per square yard TECASAFE® Plus

- two welted hip pockets
- pocket flaps on hip pockets with hook and loop closure
- two pleated cargo pockets with hook and loop closure on flaps
- reinforced knees
- waist adjustable with hook and loop take up tabs
- outseams and seat seam are reinforced by double topstitching entire length
- waistband closes with button/buttonhole
- hook and loop take up straps with metal loop ring at leg bottoms
- two inserted front pockets
- NOMEX® ripstop pocketing
- brass zipper with NOMEX® zipper tape
- sewn throughout with NOMEX® thread

SH35  
Nomex®

5648  
Yellow

Tecasafe®  
7.0 oz.

4748  
Yellow

Tecasafe®  
5.8 oz.

4448  
Yellow

PA15  
Nomex®

Spruce  
5675

Tecasafe®

Spruce  
4775

### SHIRT SIZES:

	Small	Medium	Large	X-Large	2X-Large	3X-Large
Neck Size	14-14½	15-15½	16-16½	17-17½	18-18½	19-19½
Slv Length-S	31½"	32½"	33½"	34"	35½"	36½"
Slv Length-M	32½"	33½"	34½"	35½"	36½"	37½"
Slv Length-L	33½"	34½"	35½"	36½"	37½"	38½"
Slv Length-XL	-	35½"	36½"	37½"	38½"	39½"

### PANT SIZES:

**Waist:** 30"-48" (Even Sizes). Inseams 30, 32, 34 or 36.  
All pants will be supplied with finished leg bottoms  
(hook and loop take up tabs on leg bottoms).

# Two-Piece Extrication Suits of FR Cotton INDURA<sup>®</sup>



JK28



Extrication Jacket

## Model JK28 Extrication Jacket

**Fabric:** 9.0 oz. per square yard INDURA<sup>®</sup>

- radio pocket on left breast with microphone loop positioned above pocket
- right breast pocket with full flap and F.R. hook and loop closure
- Kevlar felt sleeve reinforcement at elbow
- sleeve cuffs have F.R. hook and loop closure straps providing snug fit around the wrist
- 2" Scotchlite triple trim is attached around the sleeves, and around the bottom of the jacket
- two belled cargo pockets with full flap and F.R. hook and loop closure
- heavy-duty zipper with Nomex<sup>®</sup> zipper tape
- hook and loop closure tabs on front to conceal zipper
- 3" high collar with throat piece and F.R. hook and loop closure
- sewn throughout with NOMEX<sup>®</sup> thread

Note: NOMEX<sup>®</sup> and UltraSoft<sup>®</sup> styles available on special order.

JK28-5605	NOMEX <sup>®</sup>	6.0 oz. Navy	(Min 4)
JK28-5645	NOMEX <sup>®</sup>	6.0 oz. Red	(Min 4)
JK28-5650	NOMEX <sup>®</sup>	6.0 oz. Tan	(Min 4)
JK28-3845	UltraSoft <sup>®</sup>	9.0 oz. Red	(Min 4)

### EXTRICATION JACKET SIZES:

	Small	Medium	Large	X-Large	2X-Large	3X-Large	4X-Large
Sizes:	34-36	38-40	42-44	46-48	50-52	54-56	58-60
Regular	.	.	.	.	.	.	.
Tall	.	.	.	.	.	.	.

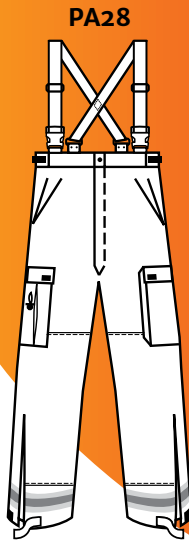
Regular: 5' 7½" - 5' 11" Tall: 5' 11½" - 6' 3"

3905 Navy

3950 Tan



## Two-Piece Extrication Suits of FR Cotton INDURA<sup>®</sup>



Extrication Pant



### Model PA28

#### Extrication Pants

**Fabric:** 9.0 oz. per square yard INDURA<sup>®</sup>

- elasticized waistband with side adjusters on both sides
- heavy duty zipper fly with NOMEX<sup>®</sup> zipper tape
- bunker pant suspenders with quick release buckles
- Kevlar felt knee reinforcement on legs enclosed in water-resistant material
- bellowed cargo pocket on left leg with flap and F.R. hook and loop closure
- EMS scissor pocket on right leg with flap and F.R. hook and loop closure
- 12" leg zippers
- 2" Scotchlite triple trim is attached around leg bottoms
- pant cuffs have F.R. hook and loop closure straps providing snug fit around the ankle
- two hip pockets with flaps and F.R. hook and loop closures
- two front pockets with NOMEX<sup>®</sup> ripstop pocketing
- sewn throughout with NOMEX<sup>®</sup> thread

Note: NOMEX<sup>®</sup> and UltraSoft<sup>®</sup> styles available on special order.

PA28-5605	NOMEX <sup>®</sup>	6.0 oz. Navy	(Min 4)
PA28-5645	NOMEX <sup>®</sup>	6.0 oz. Red	(Min 4)
PA28-5650	NOMEX <sup>®</sup>	6.0 oz. Tan	(Min 4)
PA28-3845	UltraSoft <sup>®</sup>	9.0 oz. Red	(Min 4)



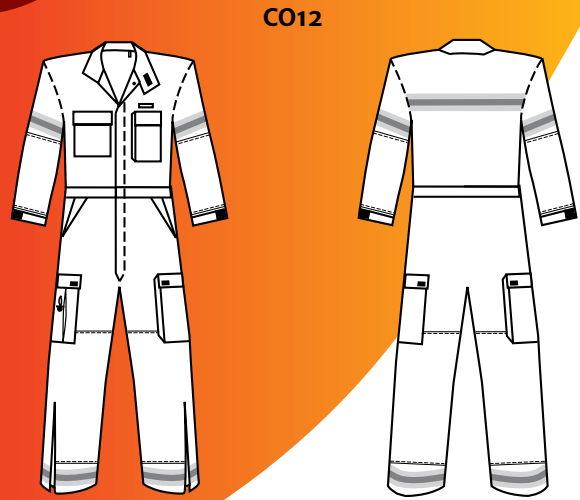
#### PANT SIZES:

Waist: 30"-48" even sizes; Inseams 28, 30, 32 or 34.

NOTE: All pants will be provided with finished leg bottoms.



# Extrication Suits of FR Cotton INDURA<sup>®</sup>



Extrication Suit Front and Back

## Model C012

### Extrication Suits

**Fabric:** 9.0 oz. per square yard INDURA<sup>®</sup>

- radio pocket on left breast with microphone loop positioned above pocket
- right breast pocket with full flap and F.R. hook and loop closure
- cinch straps on waistband with F.R. hook and loop
- Kevlar felt knee reinforcement from knee to pant cuffs
- Kevlar felt sleeve reinforcement from elbow to sleeve cuffs
- Kevlar padding on legs is enclosed in water resistant material
- bellowed cargo pocket on left leg with flap and F.R. hook and loop closure
- EMS scissor pocket on right leg with flap and F.R. hook and loop closure
- 10" leg zippers
- hook and loop take up tabs on legs
- sleeve cuffs have F.R. hook and loop closure straps providing snug fit around the wrist
- 2" Scotchlite triple trim is attached around the sleeves, around leg bottoms and across the back
- heavy-duty, two-way brass zipper with NOMEX<sup>®</sup> zipper tape
- reinforced nickel plated brass snaps covered on the inside
- pleated, bi-swing back
- two hip pockets with flaps and F.R. hook and loop closures
- side access to pants with F.R. hook and loop closures
- NOMEX<sup>®</sup> ripstop pocketing
- sewn throughout with NOMEX<sup>®</sup> thread
- 3" high collar with throat piece and F.R. hook and loop closure

Note: NOMEX<sup>®</sup> and UltraSoft<sup>®</sup> styles available on special order.

C012-5605	NOMEX <sup>®</sup>	6.0 oz. Navy	(Min 4)
C012-5645	NOMEX <sup>®</sup>	6.0 oz. Red	(Min 4)
C012-5650	NOMEX <sup>®</sup>	6.0 oz. Tan	(Min 4)
C012-3845	UltraSoft <sup>®</sup>	9.0 oz. Red	(Min 4)

#### EXTRICATION SUIT SIZES:

	Small	Medium	Large	X-Large	2X-Large	3X-Large	4X-Large
Sizes:	34-36	38-40	42-44	46-48	50-52	54-56	58-60
Short:	.	.	.	.	.	.	.
Regular:	.	.	.	.	.	.	.
Tall:	.	.	.	.	.	.	.
X-Tall:	.	.	.	.	.	.	.

Short: 5'4"-5'7" Regular: 5'7½"-5'11" Tall: 5'11½"-6'3" X-Tall: 6'3½"-6'6"

3905 Navy

3950 Tan

# Public Safety Shirts and Pants of FireWear®

SH96



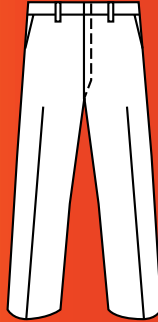
Public Safety Short Sleeve

SH95



Public Safety Long Sleeve

PA08



Uniform Style Pants



## Model SH96 Short Sleeve Model SH95 Long Sleeve Public Safety Shirts

**Fabric:** 5.5 oz. per square yard  
55% FFR™ (Fibrous Flame Retardant Fiber)  
45% Cotton, Plain weave

- three-ply banded collar with sewn-in stays
- two-ply yoke and placket front
- five sewn-in military creases with epaulets
- pleated pockets with scalloped flaps which include hook and loop closures at each corner
- long sleeve shirts have adjustable cuffs
- long rounded tails
- loose badge tab (in pocket)
- sewn throughout with NOMEX® thread

## Model PA08 Pants

**Fabric:** 9.5 oz. per square yard  
55% FFR™ (Fibrous Flame Retardant Fiber)  
45% Cotton, Twill weave

- uniform style with permanent creases
- hook and eye closure with french fly
- bottoms of side pockets are reinforced using an "X" bartack
- two inserted front pockets
- outseams are reinforced by topstitching entire length
- self-locking brass zipper with NOMEX® zipper tape
- seven belt loops will take 2" belts
- two welted hip pockets, left one has button and loop closure
- sewn throughout with NOMEX® thread

SH95

7505 Navy

7520 Med. Blue

SH96

7505 Navy

7520 Med. Blue

PA08

7905 Navy

### SHORT SLEEVE PUBLIC SAFETY SHIRT SIZES:

Small	Medium	Large	X-Large	2X-Large	3X-Large
14-14½	15-15½	16-16½	17-17½	18-18½	19-19½

Note: 4XL available in navy blue

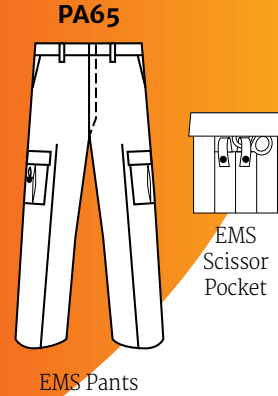
### LONG SLEEVE PUBLIC SAFETY SHIRT SIZES:

Neck/Sleeve	14-14½	15-15½	16-16½	17-17½	18-18½	19-19½
33"	.	.	.	.	.	.
35"	.	.	.	.	.	.
37"	.	.	.	.	.	.

### PANT SIZES:

Waist:	28"-36" all sizes - 38"-54" even sizes - Open Bottoms: 37" unfinished
--------	--

# EMS Pants of FireWear®



## Model PA65 EMS Pants

**Fabric:** 9.5 oz. per square yard  
55% FFR™ (Fibrous Flame Retardant Fiber)  
45% Cotton, Twill weave

- large cargo pocket on left leg with flap that closes with two hidden snaps
- right leg has EMS scissor pocket
- bottoms of side pockets are reinforced using an "X" bartack
- two inserted front pockets
- self-locking brass zipper with NOMEX® zipper tape
- hook and eye waist closure with french fly
- fully lined waistband with FR shirt grip
- two patch hip pockets with hidden snap closures
- seven belt loops will take 2" belts
- sewn throughout with NOMEX® thread

**PANT SIZES:**

Waist:

28"-36" all sizes • 38"-52" even sizes •  
Open Bottoms: 37" unfinished

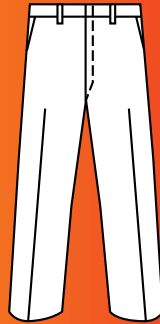
# Shirts and Pants of FR Cotton INDURA<sup>®</sup>

**SH93**



Long Sleeve Uniform Style Shirt

**PA26**



Pants



## Model SH93

### Long Sleeve Shirts

**Fabric:** 7.0 oz. per square yard INDURA<sup>®</sup>

- three-ply banded collar with sewn-in stays
- plain style front with long rounded tails
- button flaps on both pockets, pencil slot in left flap
- two-ply yoke
- adjustable cuff closure with two buttons
- sewn throughout with NOMEX<sup>®</sup> thread

## Model PA26

### Pants

**Fabric:** 9.0 oz. per square yard INDURA<sup>®</sup>

- uniform style with self-locking brass zipper
- two inserted front pockets
- seven belt loops take 2" belts
- two welted hip pockets, left one has button and loop closure
- sewn throughout with NOMEX<sup>®</sup> thread

#### LONG SLEEVE SHIRT SIZES:

Neck/ Sleeve	Small 14-14 <sup>1</sup>	Medium 15-15 <sup>1</sup>	Large 16-16 <sup>1</sup>	X-Large 17-17 <sup>1</sup>	2X-Large 18-18 <sup>1</sup>	3X-Large 19-19 <sup>1</sup>
Short	32"	•	•	•		
Medium	33"	•	•	•	•	•
Long	35"		•	•	•	•
X-Long	36"		•	•	•	•

#### PANT SIZES:

Waist:	28"-36" all sizes, 38"-50" even sizes Open Bottoms: 37" unfinished
--------	---

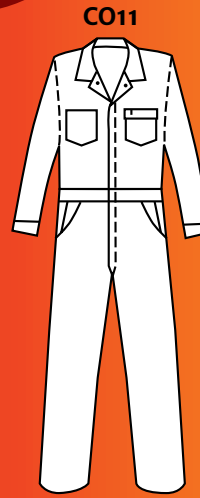
SH93

3605  
Navy

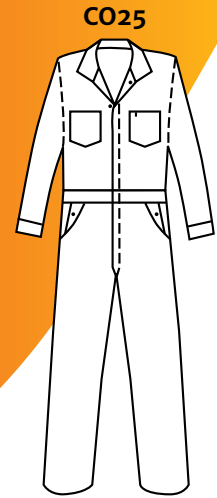
PA26

3905  
Navy

# Economy and Standard Coveralls of FR Cotton INDURA<sup>®</sup>



Economy Coveralls



Standard Coveralls

## Model C011 Economy Coveralls

**Fabric:** 9.0 oz. per square yard INDURA<sup>®</sup>

- heavy-duty, two-way brass zipper
- pleated, bi-swing back
- two patch breast pockets with flap and pencil slot on left pocket
- two hip pockets with a snap closure on the left hip pocket
- 2-in-1 utility/tool pocket on right leg
- side access to pants with snap closure
- two inserted front pockets
- 2-ply cuff with snap closure
- sewn throughout with NOMEX<sup>®</sup> thread

## Model C025 Standard Coveralls

**Fabric:** 9.0 oz. per square yard INDURA<sup>®</sup>

- heavy-duty, two-way brass zipper
- nickel plated brass snaps
- pleated bi-swing back
- two patch breast pockets, pencil slot in left pocket
- two hip pockets with a snap closure on the left
- 2-in-1 utility/tool pocket on right leg
- side access to pants with snap closure
- two inserted front pockets
- adjustable cuffs with snap closures
- sewn throughout with NOMEX<sup>®</sup> thread

C011

3905 Navy

C025

3905 Navy

3950 Tan

### ECONOMY COVERALL SIZES:

Chest:	38	40	42	44	46	48	50	52	54	56	58	60	62	64
Short:	.	.	.	.	.	.	.	.	.	.	.	.	.	.
Regular:	.	.	.	.	.	.	.	.	.	.	.	.	.	.
Tall:	.	.	.	.	.	.	.	.	.	.	.	.	.	.

Regular: 5' 7½" - 5' 11" Tall: 5' 11½" - 6' 3"

### STANDARD COVERALL SIZES:

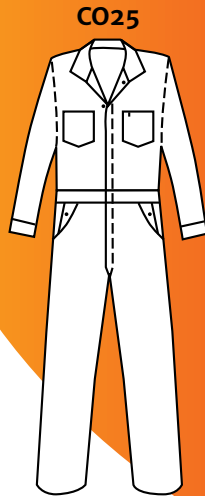
Chest:	36	38	40	42	44	46	48	50	52	54	56
Short:	.	.	.	.	.	.	.	.	.	.	.
Regular:	.	.	.	.	.	.	.	.	.	.	.
Tall:	.	.	.	.	.	.	.	.	.	.	.

Short: 5' 4"-5' 7" Regular: 5' 7½"- 5' 11" Tall: 5' 11½"- 6' 3"

Note: Additional sizes are available in some colors.



# Coveralls of UltraSoft<sup>®</sup>



Coveralls



## Model CO25 Coveralls

**Fabric:** 9.0 oz. per square yard UltraSoft<sup>®</sup>

- heavy-duty, two-way brass zipper
- nickel plated brass snaps
- pleated bi-swing back
- two patch breast pockets, pencil slot in left pocket
- two hip pockets with a snap closure on the left
- 2-in-1 utility/tool pocket on right leg
- side access to pants with snap closure
- two inserted front pockets
- adjustable cuffs with snap closures
- sewn throughout with NOMEX<sup>®</sup> thread

### UNLINED COVERALL SIZES:

Chest:	40	42	44	46	48	50	52	54	56	58	60
Short:	.	.	.	.	.	.	.	.	.	.	.
Regular:	.	.	.	.	.	.	.	.	.	.	.
Tall:	.	.	.	.	.	.	.	.	.	.	.

Short: 5' 4" - 5' 7"    Regular: 5' 7½" - 5' 11"    Tall: 5' 11½" - 6' 3"

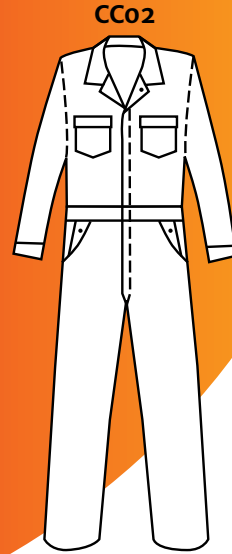
3805  
Navy

3815  
Royal

NFPA 70E Arc Rating  
7.0 oz. - 9.2  
PPE Category 2



# Standard Coverall (7.0 oz.)



Unlined Coverall

## Model CCo2 Coverall

**Fabric:** 7.0 oz. per square yard  
Flame Resistant 88% Cotton/12% Nylon

- heavy-duty, two-way high temperature nylon zipper with Aramid tape
- snaps are thru 2 ply, covered on back so no metal is exposed to skin
- pleated bi-swing back with elasticized waistband
- two patch breast pockets with flap closure
- two hip pockets with a snap closure on the left
- 2-in-1 utility/tool pocket on right leg
- side access to pants with snap closure
- adjustable cuffs with snap closures
- FR pockets
- sewn throughout with Aramid thread



### UNLINED COVERALL SIZES:

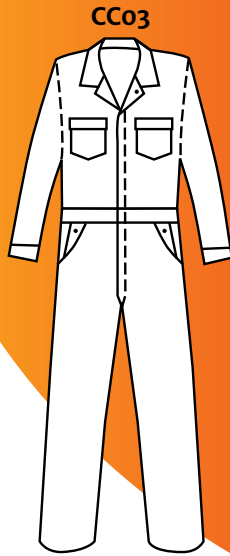
Chest:	40	42	44	46	48	50	52	54	56	58	60	62
Regular:	.	.	.	.	.	.	.	.	.	.	.	.
Tall:	.	.	.	.	.	.	.	.	.	.	.	.

Regular: up to 5' 11" Tall: 5' 11½" and up  
NOTE: 40T, 64R, 60T and 62T also available in navy blue.

22705  
Navy

22750  
Tan

## Standard Coverall (9.0 oz.)



Unlined Coverall



### Model CC03 Coverall

**Fabric:** 9.0 oz. per square yard  
Flame Resistant 88% Cotton/12% Nylon

- heavy-duty, two-way high temperature nylon zipper with Aramid tape
- snaps are thru 2 ply, covered on back so no metal is exposed to skin
- pleated bi-swing back with elasticized waistband
- two patch breast pockets with flap closure
- two hip pockets with a snap closure on the left
- 2-in-1 utility/tool pocket on right leg
- side access to pants with snap closure
- adjustable cuffs with snap closures
- FR pockets
- sewn throughout with Aramid thread



#### UNLINED COVERALL SIZES:

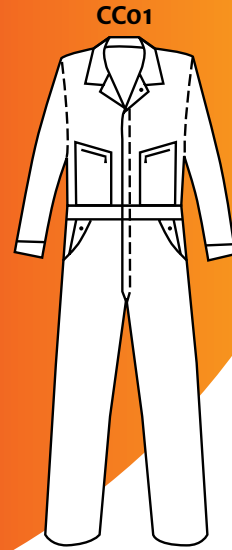
Chest:	40	42	44	46	48	50	52	54	56	58	60	62
Regular:	.	.	.	.	.	.	.	.	.	.	.	.
Tall:	.	.	.	.	.	.	.	.	.	.	.	.

Regular: up to 5' 11" Tall: 5' 11½" and up  
NOTE: 40T, 64R, 60T, 62T and 64T also available in navy blue.

22905  
Navy

22950  
Tan

# Zipper Pocket Coverall



Zipper Pocket Coverall

## Model CCo1

### Coverall with Slanted Zipper Closing Breast Pockets

**Fabric:** 7.0 oz. per square yard  
Flame Resistant 88% Cotton/12% Nylon

- heavy-duty, two-way high temperature nylon zipper with Aramid tape
- snaps are thru 2 ply, covered on back so no metal is exposed to skin
- pleated bi-swing back with elasticized waistband
- two patch breast pockets with high temperature nylon zippers with Aramid tape
- two hip pockets with a snap closure on the left
- 2-in-1 utility/tool pocket on right leg
- side access to pants with snap closure
- adjustable cuffs with snap closures
- FR pockets
- sewn throughout with Aramid thread



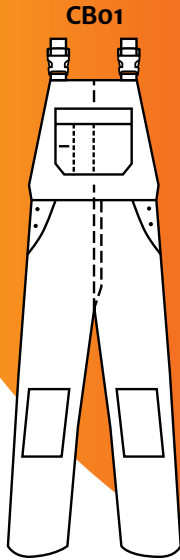
#### UNLINED COVERALL SIZES:

Chest:	40	42	44	46	48	50	52	54	56	58	60	62	64
Regular:	.	.	.	.	.	.	.	.	.	.	.	.	.
Tall:	.	.	.	.	.	.	.	.	.	.	.	.	.

Regular: up to 5' 11" Tall: 5' 11½" and up

22730  
Grey

## Bib Overalls



Unlined Bib Overalls



### Model CB01

#### Unlined Bib Front Overalls

**Fabric:** 9.0 oz. per square yard  
Flame Resistant 88% Cotton/12% Nylon

- bib style front and back with adjustable shoulder straps
- shoulder straps close with heavy-duty buckle
- 4-in-1 bib pocket on front with hook and loop closure
- two large reinforced rear patch pockets
- 2-in-1 utility pocket on right leg, reinforced at bottom
- reinforced utility pocket on left leg
- waist closes with two buttons on each side
- two front slash pockets with FR pocketing
- zipper fly-high temperature nylon zipper with Aramid tape
- knee reinforcement with 4" opening at bottom to insert knee pads
- 3 needle topstitched outseams
- 4 needle waistband design
- sewn throughout with Aramid thread



#### BIB OVERALL SIZES:

	Small	Medium	Large	X-Large	2X-Large	3X-Large
Waist:	32-34	36-38	40-42	44-46	48-50	52-54
Regular:	•	•	•	•	•	•
Tall:	•	•	•	•	•	•

Regular: up to 5' 11" Tall: 5' 11½" and up



NFPA 70E Arc Rating  
 7.0 oz.-9.2  
 9.0 oz.-14.0  
 PPE Category 2



# Button Front Shirts and Cargo Pants



CS04



Long Sleeve Shirts

CP02



Cargo Pants

## Model CS04

### Button Front Long Sleeve Shirts

**Fabric:** 7.0 oz. per square yard  
 Flame Resistant 88% Cotton/12% Nylon

- banded collar with button down collar points
- double-stitched, oversize pockets with flaps
- button flap closures on both pockets
- adjustable cuffs
- heat resistant buttons
- two-ply yoke with box pleat
- placket front
- long rounded tails
- sewn throughout with Aramid thread
- CS04 shirts are compliant with N.F.P.A. 2112 (Current Edition)

## Model CP02

### Cargo Pants

**Fabric:** 9.0 oz. per square yard  
 Flame Resistant 88% Cotton/12% Nylon

- large cargo pocket on each leg with flaps and hook and loop closure
- high temperature nylon zipper with Aramid tape
- hook and eye waist closure with french fly
- seven belt loops will take 2" belt
- fully lined waistband with FR shirt grip
- two welted hip pockets; left one has button and loop closure
- FR pockets
- sewn throughout with Aramid thread

CS04

22705 Navy

22720 Med. Blue

22750 Tan

CP02

22905 Navy

#### LONG SLEEVE SHIRT SIZES:

	Small	Medium	Large	X-Large	2X-Large	3X-Large
Neck/ Sleeve	14-14½	15-15½	16-16½	17-17½	18-18½	19-19½
Slv Length-M	32½	33½	34½	35	35½	36½
Slv Length-L		35	35½	36½	37½	38

#### PANT SIZES:

Waist:	30,32,33,34,35,36,38,40,42,44,46,48 and 50
Open Bottoms:	38" unfinished

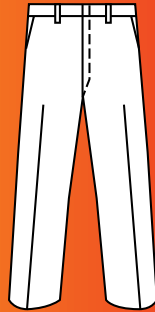
# Shirts with Accent Color and Pants

CS05



Long Sleeve Shirts

CP01



Pants



## Model CS05

### Long Sleeve Shirts with Accent Color

**Fabric:** 7.0 oz. per square yard  
Flame Resistant 88% Cotton/12% Nylon

- banded collar with button down collar points
- accent color is on inner collarband and sleeve cuff facing
- double-stitched, oversize pockets with flaps
- button flap closures on both pockets
- adjustable cuffs
- heat resistant buttons
- two-ply yoke with box pleat
- placket front
- long rounded tails
- sewn throughout with Aramid thread
- CS05 shirts are compliant with N.F.P.A. 2112 (Current Edition)



## Model CP01

### Pants

**Fabric:** 9.0 oz. per square yard  
Flame Resistant 88% Cotton/12% Nylon

- hook and eye waist closure with french fly
- high temperature nylon zipper with Aramid tape
- seven belt loops will take 2" belt
- two welted hip pockets; left one has button and loop closure
- fully lined waistband with FR shirt grip
- FR pockets
- sewn throughout with Aramid thread

#### LONG SLEEVE SHIRT SIZES:

	Small	Medium	Large	X-Large	2X-Large	3X-Large
Neck/ Sleeve	14-14½	15-15½	16-16½	17-17½	18-18½	19-19½
Slv Length-M	32½	33½	34½	35	35½	36½
Slv Length-L		35	35½	36½	37½	38

#### PANT SIZES:

Waist:	30,32,33,34,35,36,38,40,42,44,46 and 48
Open Bottoms:	38" unfinished

NOTE: Waist 50 also available in navy blue.

CS05

22705  
Navy/  
Tan

22720  
Med.  
Blue/  
Navy

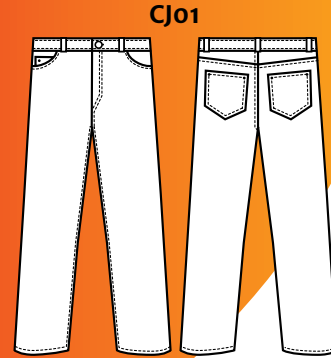
22750  
Tan/  
Navy

CP01

22905  
Navy

22950  
Tan

# Denim Jeans



Denim Jeans

## Model CJo1 Denim Jeans

**Fabric:** 14.0 oz. per square yard  
Flame Resistant 100% Cotton FR Denim

- jean style with scooped front pockets
- right pocket has watch pocket
- brass zipper with Aramid tape
- waistband closes with shank button and buttonhole
- two patch hip pockets on back
- seven belt loops will take 2" belt
- FR pockets
- sewn throughout with Aramid thread

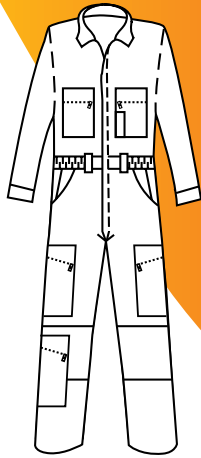


### DENIM JEAN SIZES

	30	32	34	36	38	40	42	44	46	48
Regular: (32" inseam)	.	.	.	.	.	.	.	.	.	.
Tall: (34" inseam)	.	.	.	.	.	.	.	.	.	.
Unfinished (38" length)	.	.	.	.	.	.	.	.	.	.

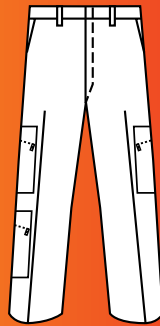
# CDC Pants and Tactical Wear Unlined Coveralls

**CO43**



Tactical Wear Coverall

**PA31**



CDC Pants



## Model PA31 Men's Style CDC Pants

**Fabric:** 7.75 oz. per square yard 65% polyester/35% cotton

- cargo pocket on each leg with a slanted zipper closure
- additional cargo pocket below right knee with slanted zipper closure
- self-locking brass zipper
- hook and eye waist closure with french fly
- two inserted front pockets
- two patch hip pockets with flaps
- concealed hook and loop closure on hip pocket flaps
- seven belt loops will take 2" belts

## Model CO43 CDC Tactical Wear Coveralls

**Fabric:** Regular Weight:  
7.75 oz. per square yard 65% polyester/35% cotton  
Light Weight:  
5.5 oz. per square yard 65% polyester/35% cotton

- hook and loop closure at neck
- two breast pockets with zipper closures
- pencil slot on left breast pocket
- concealed heavy-duty, two-way brass zipper
- cuffs on sleeves with concealed snap closure
- pleated bi-swing back with elasticized inserts
- two inserted front pockets are reinforced at bottom
- double reinforcement over knees
- cargo pocket on each leg with a zipper closure
- additional cargo pocket below right knee with slanted zipper closure
- belt loops
- two zippered hip pockets

**CO43**  
Regular  
Weight

1872  
Olive

Light  
Weight

0672  
Olive

**PA31**

1872  
Olive

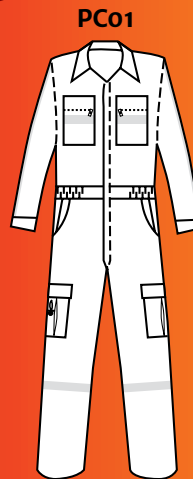
TACTICAL WEAR UNLINED COVERALL SIZES:													
Chest:	36	38	40	42	44	46	48	50	52	54	56	58	60
Short:	.	.	.	.	.	.	.	.	.	.	.	.	.
Regular:	.	.	.	.	.	.	.	.	.	.	.	.	.
Tall:	.	.	.	.	.	.	.	.	.	.	.	.	.

Short: 5' 4" - 5' 7"    Regular: 5' 7½" - 5' 11"    Tall: 5' 11½" - 6' 3"

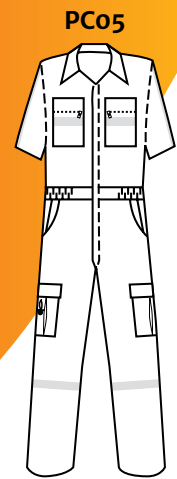
MEN'S PANT SIZES:	
Waist:	28"-38" all sizes, 40"-52" even sizes Open Bottoms: 37" unfinished



# One-Piece Uniform Suits



Long Sleeve



Short Sleeve

## Model PC01 Long Sleeve Model PC05 Short Sleeve Over-The-Clothes Fit Uniform Suit

**Fabric:** 7.75 oz. per square yard Comfort Twill  
65% polyester/35% cotton

- two patch breast pockets with zipper closure and 1" Scotchlite® reflective trim across the width of the pocket
- concealed heavy-duty, two-way brass zipper
- sleeves have 1" Scotchlite® reflective trim from shoulder to cuff
- cuffs fasten with concealed snaps
- unique design glove/scissor pocket on the right leg. The pocket comprises a three part scissor pocket on the outside, a separate glove pocket in the center with a large 8½" x 9" bellowed cargo pocket behind. The separate glove pocket in the center measures 5½" x 7½" and ensures that surgical gloves can be stored separately from other items. The glove/scissor pocket fastens closed with a pocket flap and hook and loop tape
- the left leg has a spacious pleated cargo pocket measuring 9" x 9". The cargo pocket fastens closed with a pocket flap and hook and loop tape
- two patch hip pockets on the rear which fasten closed with pocket flaps and hook and loop tape. Hip pockets have 1" Scotchlite® reflective trim across the width of the pocket
- pleated bi-swing back with elasticized waist
- reinforced knees for enhanced durability
- suit legs have 1" Scotchlite® reflective trim around the leg below the knee
- side pockets with "self fabric" pocketing and side access to pants with snap closure

PC01

1805  
Navy  
Blue

1815  
Royal

PC05

1805  
Navy  
Blue

1815  
Royal

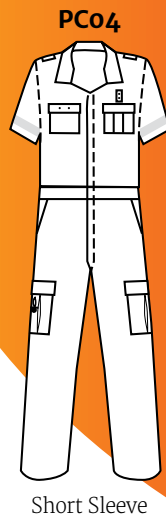
### OVER-THE-CLOTHES FIT UNIFORM SUIT SIZES:

	Small	Medium	Large	X-Large	2X-Large	3X-Large
Chest:	34-36	38-40	42-44	46-48	50-52	54-56
Short:	.	.	.	.	.	.
Regular:	.	.	.	.	.	.
Tall:	.	.	.	.	.	.

Short: 5' 4" - 5' 7" Regular: 5' 7½" - 5' 11" Tall: 5' 11½" - 6' 3"



# One-Piece Uniform Suit



## Model PC04

### Metro Style One-Piece Uniform

**Fabric:** 5.5 oz. per square yard Comfort Twill  
65% polyester/35% cotton

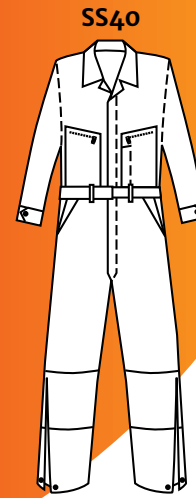
- two patch breast pockets with pocket flaps and hook and loop closure which run the full width of the pocket
- left breast pocket has a pen/pencil compartment on the outside
- right breast pocket has horizontally placed badge eyelets in the pocket flap
- badge tab on the left front with metal eyelets
- short sleeves with 1" Scotchlite® lime yellow trim on cuffs
- concealed heavy-duty, two-way brass zipper
- unique design glove/scissor pocket on the right leg. The pocket comprises a three part scissor pocket on the outside, a separate glove pocket in the center with a large 8½" x 9" bellowed cargo pocket behind. The separate glove pocket in the center measures 5½" x 7½" and ensures that surgical gloves can be stored separately from other items. The glove/scissor pocket fastens closed with a pocket flap and hook and loop tape
- the left leg has a low profile pleated pocket which fastens closed with a pocket flap and hook and loop tape
- patch hip pocket on the left rear with pocket flap and hook and loop tape closure
- hip pocket has 1" Scotchlite® lime yellow trim across the width of the pocket
- bellowed radio pocket on the right rear with hook and loop closure. Radio pocket measures 6" x 2" with a 1½" bellow
- pleated bi-swing back with elasticized waist
- suit back has 1" Scotchlite® lime yellow reflective trim across the back placed 4" above the waistband
- side pockets with "self fabric" pocketing
- reinforced knees for enhanced durability
- microphone loop on both shoulders

#### METRO STYLE ONE-PIECE UNIFORM SIZES:

Chest:	34	36	38	40	42	44	46	48	50	52	54	56
Short:												
Regular:												
Tall:												

Short: 5' 4" - 5' 7" Regular: 5' 7½" - 5' 11" Tall: 5' 11½" - 6' 3"

# SQUAD SUIT



Squad Suit

## Model SS40 Squad Suit

**Fabric:** 6.5 oz. per square yard  
65% polyester/35% cotton

- pleated bi-swing back with elasticized waist
- heavy-duty, two-way brass zipper
- adjustable hook and loop belt closure
- two slanted breast pockets have zippers; left breast pocket has a pencil slot
- two inserted side pockets
- two rear patch pockets with a zipper on the left pocket
- large utility pocket on right leg
- side access to pants
- reinforced knees
- zippered leg bottoms with adjustable snaps
- loose badge tab (in pocket)

### SQUAD SUIT SIZES:

	X-Small	Small	Medium	Large	X-Large	2X-Large	3X-Large	4X-Large
Sizes:	30-32	34-36	38-40	42-44	46-48	50-52	54-56	58-60
Short:	.	.	.	.	.	.	.	.
Regular:	.	.	.	.	.	.	.	.
Tall:	.	.	.	.	.	.	.	.
X-Tall:	.	.	.	.	.	.	.	.

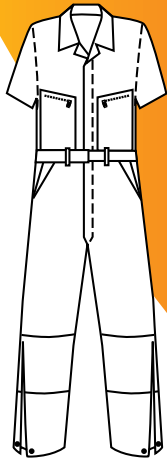
Short: 5' 4"-5' 7" Regular: 5' 7½"-5' 11" Tall: 5' 11½"-6' 3" X-Tall: 6' 3½"-6' 6"

1010  
Midnight

40

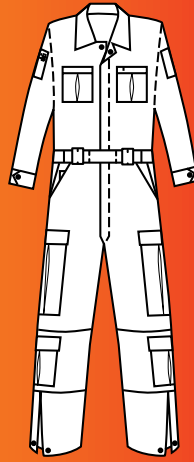
# Short Sleeve SQUAD SUIT and SQUAD SUIT T-14

SS63



Short Sleeve Squad Suit

SS60



Squad Suit T-14



## Model SS63

### Short Sleeve Squad Suit

**Fabric:** 6.5 oz. per square yard  
65% polyester/35% cotton

- pleated bi-swing back with elasticized waist
- heavy-duty, two-way brass zipper
- adjustable hook and loop belt closure
- two slanted breast pockets have zippers; left breast pocket has a pencil slot
- two inserted front pockets
- two rear patch pockets with a zipper on the left pocket
- large utility pocket on right leg
- side access to pants
- reinforced knees
- zippered leg bottoms with adjustable snaps
- loose badge tab (in pocket)

## Model SS60

### Squad Suit T-14

**Fabric:** 7.75 oz. per square yard  
65% polyester/35% cotton

- pleated bi-swing back with elasticized waist
- heavy-duty, two-way brass zipper
- adjustable hook and loop belt closure
- two pleated breast pockets with flaps
- sleeve pockets on both sleeves
- two pleated cargo pockets on each leg
- reinforced knees
- side access to pants
- adjustable sleeve cuffs
- zippered leg bottoms with adjustable snaps
- loose badge tab (in pocket)

SS63

1010  
Midnight

SS60

1110  
Midnight

1139  
Black

#### SHORT SLEEVE SQUAD SUIT AND SQUAD SUIT T-14 SIZES:

	Small	Medium	Large	X-Large	2X-Large	3X-Large	4X-Large
Sizes:	34-36	38-40	42-44	46-48	50-52	54-56	58-60
Short:	•	•	•	•			
Regular:	•	•	•	•	•	•	•
Tall:		•	•	•	•	•	•
X-Tall:			•	•	•		

Short: 5' 4"-5' 7" Regular: 5' 7½"-5' 11" Tall: 5' 11½"-6' 3" X-Tall: 6' 3½"-6' 6"

# Public Safety Shirts and Pants



SH99



Public Safety Short Sleeve

SH97



Public Safety Long Sleeve

## Model SH99 Short Sleeve Model SH97 Long Sleeve Public Safety Style Shirts

**Fabric:** 4.4 oz. per square yard (white, light blue)  
7.75 oz. per square yard (midnight navy)  
65% polyester/35% cotton

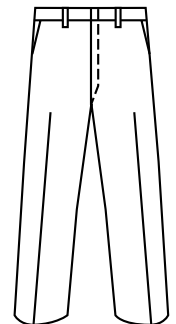
- three-ply banded collar with sewn-in stays
- two-ply yoke and placket front
- five sewn-in military creases with epaulets
- pleated pockets with scalloped flaps which include hook and loop closures at each corner
- long sleeve shirts have adjustable cuffs
- long rounded tails
- loose badge tab (in pocket)

## Model PA27 Work Horse Twill® Pants

**Fabric:** 7.75 oz. per square yard  
65% polyester/35% cotton

- uniform style with hook and eye closure with french fly
- self-locking brass zipper
- seven belt loops will take 2" belts
- two inserted front pockets
- two welted hip pockets; left one has button and loop closure
- SNUG-TEX® shirt grip waistband

PA27



Pants

SH99

0725  
Lt. Blue

0760  
White

1110  
Midnight

SH97

0760  
White

1110  
Midnight

PA27

1110  
Midnight

### SHORT SLEEVE PUBLIC SAFETY SHIRT SIZES:

Small	Medium	Large	X-Large	2X-Large	3X-Large
14-14½	15-15½	16-16½	17-17½	18-18½	19-19½

Note: 4X-Large available in midnight navy

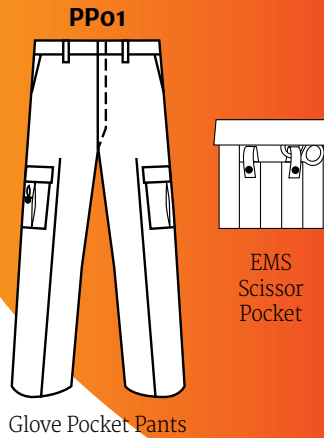
### LONG SLEEVE PUBLIC SAFETY SHIRT SIZES:

Neck/ Sleeve	14-14½	15-15½	16-16½	17-17½	18-18½	19-19½
33"	.	.	.	.	.	.
35"	.	.	.	.	.	.
37"	.	.	.	.	.	.

### PANT SIZES:

Waist:	28"-37" all sizes - 38"-54" even sizes Open Bottoms: 37" unfinished
--------	--

# EMS Glove Pocket Pants



## Model PP01

### Plain Front Glove Pocket Pants

**Fabric:** 7.75 oz. per square yard Comfort Twill  
65% polyester/35% cotton

- full cut pant for ease of motion and comfort with permanent creases both front and back
- 2" wide waistband with Snug-Tex® shirt grip on the inside
- two inserted front pockets
- unique design glove/scissor pocket on the right leg. The pocket comprises a three part scissor pocket on the outside, a separate glove pocket in the center with a large 8 1/2" x 9" bellowed cargo pocket behind. The separate glove pocket in the center measures 5 1/2" x 7 1/2" and ensures that surgical gloves can be stored separately from other items. The glove/scissor pocket fastens closed with a pocket flap and hook and loop tape
- the left leg has a spacious bellowed cargo pocket measuring 7" x 8" with a 2" bellow. The cargo pocket fastens closed with a pocket flap and two concealed snaps per pocket
- two patch hip pockets on the rear which fasten closed with a pocket flap and two concealed snaps per pocket
- reinforced knees for enhanced durability

- 1805 Navy Blue
- 1810 Midnight Navy
- 1839 Black
- 1855 Brown

#### PANT SIZES:

Waist:	28"-37" all sizes • 38"-54" even sizes
Open Bottoms:	37" unfinished

NOTE: Additional sizes are available in some colors





# EMS Jacket and Liner



Available Outershell Fabrics:	Available Colors:
<b>POLYESTER/COTTON</b> 7.75 oz. per square yard (65% polyester / 35% cotton)	1110 - Midnight Navy 1115 - Royal Blue 1139 - Black
<b>Tecasafe® PLUS</b> 7.0 oz per square yard (48% modacrylic / 37% cellulosic / 15% para-aramid )	4708 - Hi-Vis Yellow
<b>NOMEX®</b> 6.0 oz per square yard (DuPont NOMEX® aramid)	5605 - Navy Blue 5615 - Royal Blue 5639 - Black 5645 - Red 5650 - Tan
<b>ADVANCE™</b> 7.0 oz. per square yard ADVANCE™ Rip-Stop (40% NOMEX® / 60% Kevlar )	6139 - Black 6152 - Khaki 6159 - Gold

## Model EJ01

### EMS Jacket

**Lining Fabric:** 5.2 oz. per square yard  
2 ply laminate of woven polyester  
and breathable PTFE membrane

- nylon zipper closure with inner and outer storm flaps
- radio pocket on left front with flap and hook and loop closure
- stethoscope pocket on right front
- two microphone loops are positioned on left and right fronts
- two bellowed cargo pockets with full flap with hook and loop closure
- 2" Scotchlite triple trim is attached around upper sleeves and the bottom of the jacket (lime/yellow or red/orange)
- sleeve cuffs have hook and loop closure straps for snug fit around the wrist
- zipper track for zip in/zip out fleece liner

## EL01-1939

### EMS Jacket Liner

**Fabric:** 13.5 oz. 100% polyester fleece

Customization  
is available

High-Vis  
Jacket



### EMS JACKET

	Small	Medium	Large	X-Large	2X-Large	3X-Large	4X-Large
Chest:	34-36	38-40	42-44	46-48	50-52	54-56	58-60
Short:	.	.	.	.	.	.	.
Regular:	.	.	.	.	.	.	.
Tall:	.	.	.	.	.	.	.

Short: 5' 4" - 5' 7" Regular: 5' 7½" - 5' 11" Tall: 5' 11½" - 6' 3"

# Standard and Deluxe EMS Pant

Available Outershell Fabrics:	Available Colors:
<b>POLYESTER/COTTON</b> 7.75 oz. per square yard (65% polyester / 35% cotton)	1110 - Midnight Navy 1115 - Royal Blue 1139 - Black
<b>Tecasafe® PLUS</b> 7.0 oz per square yard (48% modacrylic / 37% cellulosic / 15% para-aramid )	4708 - Hi-Vis Yellow
<b>NOMEX®</b> 6.0 oz per square yard (DuPont NOMEX® aramid)	5605 - Navy Blue 5615 - Royal Blue 5639 - Black 5645 - Red 5650 - Tan
<b>ADVANCE™</b> 7.0 oz. per square yard ADVANCE™ Rip-Stop (40% NOMEX® / 60% Kevlar )	6139 - Black 6152 - Khaki 6159 - Gold



## Model EP01

### Standard EMS Pant

**Lining Fabric:** 5.2 oz. per square yard  
2 ply laminate of woven polyester  
and breathable PTFE membrane

- EMS scissor pocket on right leg with flap and hook and loop closure
- bellowed cargo pocket on left leg with flap and hook and loop closure
- 12" leg zippers with storm flap and hook and loop closure
- 2" Scotchlite triple trim is attached around leg bottoms (lime/yellow or red/orange)
- padded knees
- elasticized back waist
- belt loops



Leg Zippers with Storm Flap and Hook and Loop Closure

## Model EP02

### Deluxe EMS Pant

**Lining Fabric:** 5.2 oz. per square yard  
2-ply laminate of woven polyester  
and breathable PTFE membrane.

- same as Model EP01 above, except:
  - padded knees with Arashield reinforcement
  - no belt loops
  - waist take up straps
  - H-back suspenders



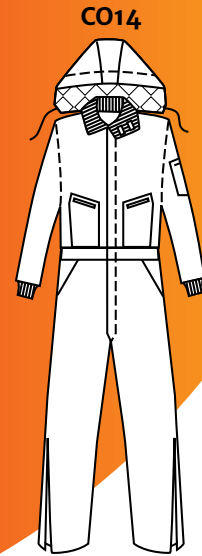
Padded Knees with Arashield Reinforcement

#### EMS PANT SIZES:

Waist:	30"-48" even sizes
Inseams:	26, 28, 30, 32 and 34"

NOTE: All pants will be provided with finished leg bottoms.

# Lined Coveralls



Deluxe Lined Coveralls

## Model CO14 Deluxe Lined Coveralls

**Fabric:** 7.75 oz. per square yard  
65% polyester/35% cotton

**Lining Fabric:** 6.0 oz. polyester batting quilted to polyester facecloth.

- heavy-duty, two-way brass zipper
- large knit collar with hook and loop closure
- two breast pockets with zippers
- removable lined hood with drawstring
- 2-in-1 pocket on left sleeve, larger section has zippered top
- two inserted front pockets
- two hip pockets with overlapping flaps
- 16" leg zippers



### DELUXE LINED COVERALL SIZES:

	Small	Medium	Large	X-Large	2X-Large	3X-Large
	34-36	38-40	42-44	46-48	50-52	54-56
Short:	.	.	.	.	.	.
Regular:	.	.	.	.	.	.
Tall:	.	.	.	.	.	.

Short: 5' 4"-5' 7" Regular: 5' 7½"-5' 11" Tall: 5' 11½"-6' 3"  
NOTE: 4XLR, 5XLR, 3XLT, 4XLT and 5XLT also available in navy blue

1105  
Navy

1475  
Spruce



# Customizing Options

## Reflective Trim

Topps garments are available with optional reflective tapes, lettering, emblems and Star of Life emblems in Reflexite® or Scotchlite®.

- Star of Life (Fronts and Backs)
- 2" and 3" letters and numbers
- 1" and 2" tapes (many colors available)
- 2" Scotchlite® triple trim (yellow/silver/yellow and red-orange/silver/red-orange)
- some options available are: front covering zipper, around sleeve cuffs, legs, length of arms, leg outseams, across front, and across back



## Additional Garment Features

Some of the trim services available are:

- epaulets
- badge tabs
- braids
- EMS pockets
- cargo pockets
- radio pockets
- pencil pockets
- transmitter loops
- attach customer's emblems
- install leg zippers
- cut to short sleeves



## Logo/Company Emblems

For larger quantities, embroidered front and back emblems are available. Please send us a sample of your design for a price quote.

## Embroidery

Some of the embroidery options available are:

- front embroidery above the pocket
- back embroidery
- fire service collar embroidery
- block, script or upper and lower letters



## Call (800) 848-2820

Our customer service representatives would be happy to help you choose from the many options available.



# EMS RESCUE

# Flame-Resistant Fabric Information

In any work environment that exposes individuals to the risk of flash fires or explosions, something that could potentially prevent a more serious burn injury or help to save a life is necessary. When seconds separate disaster from safety, flame resistant protective clothing just might be the difference that can save a life. We know that the wide range of flame resistant fabrics can be confusing to the end user confronted with

so many different fabrics to choose from, all with their own advantages and disadvantages. Topps® works closely with fiber producers and textile mills in the development and evaluation of new flame resistant fabrics. Members of the Topps® staff have the knowledge and experience to answer your questions about all types of flame resistant protective uniforms.

**DuPont™**  
**Nomex®**

Nomex® is a DuPont registered trademark.

**Fabric Content:**

DuPont NOMEX® aramid (93% NOMEX/5% KEVLAR/2% Carbon).

**Characteristics:**

Inherently flame resistant anti-static fabric engineered to reduce “nuisance” static. Self-extinguishing, will not ignite, melt, drip or burn. These characteristics make NOMEX® an exceptional all around fabric for applications such as petroleum refining, petro-chemical, fire service, and gas and electric utilities.

**Firewear**  
FFR FABRICS

FIREWEAR® FFR Fabrics are trademarks of Springfield L.L.C.

**Fabric Content:**

FIREWEAR® 55% FFR™ (Fibrous Flame Retardant Fiber)/45% Cotton

**Characteristics:**

An inherently flame resistant fabric blended from cotton and a fiber designed to smother flames when exposed to fire. The FFR™ Fiber is designed to emit a noncombustible gas through microscopic pores in the fiber when the fiber is exposed to a flame. This gas smothers the flames much like a fire extinguisher. FIREWEAR® fabrics are blended with cotton and thus have many of the natural benefits of cotton; breathability, high-moisture regain, and lightweight comfort.

**TENCATE**  
**Tecasafe Plus®**

Tecasafe® plus is a trademark of Southern Mills Inc.  
d/b/a TenCate Protective Fabrics.

**Fabric Content:**

48% modacrylic/37% cellulosic/15% para-aramid.

**Characteristics:**

Tecasafe Plus is an inherently flame resistant fabric that delivers NFPA 70E, Category 2 electric arc protection in a comfortable light weight fabric. The fabric also meets the performance requirements of NFPA 2112-Standard on Flame resistant Garments for Protection of Industrial Personnel against Flash Fire. With excellent after wash appearance, good color fastness, and durability, this fabric gives a long life cycle and consequently, exceptional value.

**TENCATE**  
**Advance™**

Advance™ is a trademark of Southern Mills Inc.  
d/b/a TenCate Protective Fabrics.

**Fabric Content:**

(40% NOMEX® / 60% Kevlar®).

**Characteristics:**

ADVANCE™ unites the proven dependability of NOMEX® with the rugged strength and durability of KEVLAR® into a unique, hardworking fabric that offers uncompromised performance. When the forces of these two flame resistant fibers are combined, the strength and durability of the resulting blend is dramatically increased.

TOPPS® FLAME RESISTANT GARMENTS MEET THE PERFORMANCE REQUIREMENTS FOR PROTECTIVE CLOTHING AS GOVERNED BY OSHA RULES 29 CFR, PART 1910.269 AND ASTM F1506.



THESE TOPPS® GARMENTS MEET ALL THE REQUIREMENTS OF NFPA 1975 STANDARD ON STATION/WORK UNIFORMS FOR FIRE AND EMERGENCY SERVICES, CURRENT EDITION.





INDURA® is a registered trademark of Westex, Inc.

**Fabric Content:**

INDURA® (100% Flame Resistant Cotton).

**Characteristics:**

100% cotton treated with a permanent flame resistant finish. INDURA® offers protection with the comfort and affordability of cotton. INDURA® is most popular in industrial applications and is effective protection against potential risks associated with welding and similar activities. INDURA® retains the beneficial properties of natural cotton for wearer comfort and absorbency.



UltraSoft® is a registered trademark of Westex, Inc.

**Fabric Content:**

UltraSoft® (88% cotton/12% High Tenacity Nylon).


**Characteristics:**

UltraSoft® fabric carries the same guarantee as INDURA® in that the flame resistant finish is guaranteed for the life of the garment. The addition of the high tenacity nylon to this fabric increases significantly the wear life of the garment without compromising the “cotton comfort.” UltraSoft® fabric is designed to withstand regular industrial launderings and offers excellent protection from both electric arc exposure and flash fire exposure.

FABRIC	WEIGHT	NFPA 70E ARC RATING	PPE CAT.
NOMEX	4.5 OZ.	4.6 Cal/cm <sup>2</sup>	1
NOMEX	6.0 OZ.	5.7 Cal/cm <sup>2</sup>	1
NOMEX	7.5 OZ.	6.6 Cal/cm <sup>2</sup>	1
ADVANCE	7.0 OZ.	8.5 Cal/cm <sup>2</sup>	2
TECASAFE PLUS	5.8 OZ.	6.5 Cal/cm <sup>2</sup>	1
TECASAFE PLUS	7.0 OZ.	9.0 Cal/cm <sup>2</sup>	2
FIREWEAR	5.5 OZ.	7.0 Cal/cm <sup>2</sup>	1
FIREWEAR	9.5 OZ.	11.5 Cal/cm <sup>2</sup>	2

FABRIC	WEIGHT	NFPA 70E ARC RATING	PPE CAT.
INDURA	7.0 OZ.	7.7 Cal/cm <sup>2</sup>	1
INDURA	9.0 OZ.	10.8 Cal/cm <sup>2</sup>	2
ULTRA SOFT	7.0 OZ.	8.7 Cal/cm <sup>2</sup>	2
ULTRA SOFT	9.0 OZ.	12.4 Cal/cm <sup>2</sup>	2
FR 88% Cotton/ 12% Nylon	7.0 OZ.	9.2 Cal/cm <sup>2</sup>	2
FR 88% Cotton/ 12% Nylon	9.0 OZ.	14.0 Cal/cm <sup>2</sup>	2
FR 100% Cotton Denim	14.0 OZ.	21.0 Cal/cm <sup>2</sup>	2

 THESE TOPPS® GARMENTS MEET ALL THE REQUIREMENTS OF NFPA 1977 STANDARD ON PROTECTIVE CLOTHING AND EQUIPMENT FOR WILDLAND FIRE FIGHTING, CURRENT EDITION.

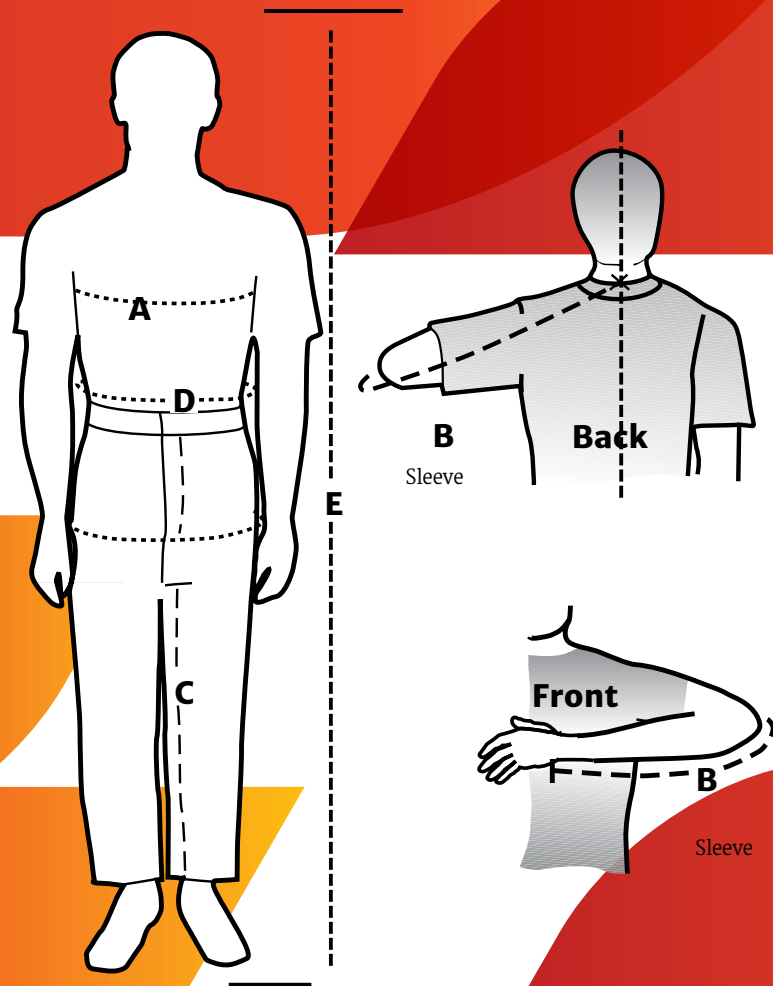
 THESE TOPPS® GARMENTS MEET ALL THE REQUIREMENTS OF NFPA 2112 STANDARD ON FLAME RESISTANT GARMENTS FOR PROTECTION OF INDUSTRIAL PERSONNEL AGAINST FLASH FIRE. CURRENT EDITION.

# How to Measure

To ensure that garments fit properly, it is important that individuals are measured properly. Use this guide to be assured of a comfortable fit.

## Basic Sizing Needed:

Long Sleeve Shirts	Neck and Sleeve
Short Sleeve Shirts	Neck
Pants	Waist and Inseam
One Piece Uniforms	Chest and Height
Coveralls	Chest and Height
Jackets and Liners	Chest and Height
Squad Suits	Chest and Height
Bib Overalls	Waist and Height
Tech Coats	Chest



## Sizing and Measuring

- A Measurement at chest (bust) line.
- B Measure sleeve length by holding arms as illustrated. Begin tape measure at nape of neck; follow contour of arm around elbow to 1" below wrist bone.
- C Measurement of inseam from high up in crotch down to lower edge of ankle bone.
- D Measurement around waist.
- E Overall height of individual.

# Meet Our Affiliate Companies



Quaker Safety has been manufacturing different types of protective clothing since 1946. However, the real roots of the company were established in 1986 when the company began to focus primarily on manufacturing garments for structural and proximity fire fighting. Substantial market research and development conducted over the years has provided Quaker Safety with insight into the requirements of the clothing from the wearer's perspective. Quaker Safety's design and manufacture of high quality turnout gear with a quick, reliable delivery schedule has become

well known and remains unsurpassed in the fire service industry.

Since 1986, Quaker Safety has developed a network of leading distributors and exporters through North America. Quaker Safety believes that service through local distribution is the best way to achieve the highest level of customer satisfaction. Quaker Safety's local distributors are always available to measure, provide technical information, and to ensure that each set of protective clothing is customized to meet each firefighter's specific needs.

**For further information about Quaker, or to request a catalog, please call (215) 536-2991.  
[www.quakersafety.com](http://www.quakersafety.com)**

**Email: [info@quakersafety.com](mailto:info@quakersafety.com)**



**PROTECTING THE WORLD'S FIREFIGHTERS**



Bristol is one of the world's leading manufacturers of protective clothing for structural fire fighting. Using the most up-to-date computer aided design and cutting equipment, Bristol has the capability to design and produce protective clothing for firefighters to meet any specialized demand.

Bristol's styles are constructed with soft, flexible, lightweight fabrics which provide the wearer with the comfort of a winter parka combined with the thermal protective performance of a more traditional turnout coat.

Bristol shares its office and warehouse facilities with Topps in Rochester, Indiana.

**For further information about Bristol, or to request a catalog, please call (800) 565-5483.  
[www.bristolfireapparel.com](http://www.bristolfireapparel.com)**

**Email: [info@bristolfireapparel.com](mailto:info@bristolfireapparel.com)**



P.O. Box 750  
2516 East State Road 14  
Rochester, Indiana 46975  
USA

Phone: (574) 223-4311  
(800) 348-2990  
(800) 547-0976

Customer Service: (800) 848-2820

Fax: (574) 223-8622  
(800) 468-9934

Email: [info@toppsafetyapparel.com](mailto:info@toppsafetyapparel.com)

Web: [www.toppsafetyapparel.com](http://www.toppsafetyapparel.com)

